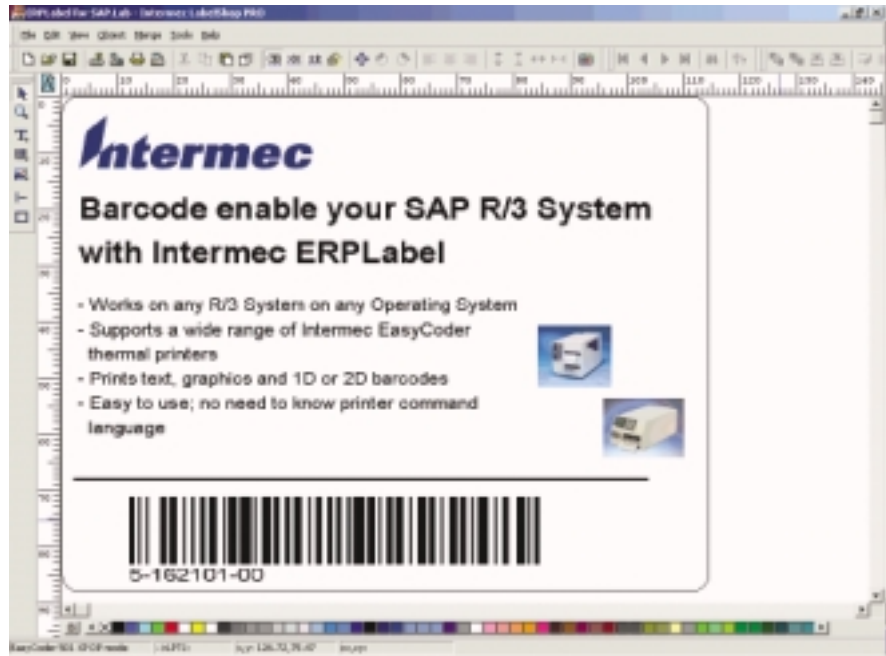


Intermec

Product Profile

- "Connect and Print"
Intermec bar code printers directly to SAP R/3
- No middleware necessary
- No special development required —saves time and money
- Use with any R/3 system independent of Operating System
- Supports local or remote printout
- Design labels with full WYSIWYG
- Print text, graphics, bar codes, lines/boxes
- Wide range of 1-D and 2-D bar code symbologies is supported
- Approved by SAP



ERPLabel™ for SAP™ R/3®

ERPLabel from Intermec provides an easy way to bar code enable your SAP R/3 system.

ERPLabel supports a wide range of Intermec EasyCoder printers.

System Integrators and developers will appreciate the easy way to implement bar code printing and the extensive bar code support. This is done without learning printer command language, or making special development, or using bar code libraries or bar code fonts.

ERPLabel is "plug-in" software for Intermec's LabelShop® PRO, that adds the interface for the R/3 system.

ERPLabel creates label files that are imported into your SAPscript®. These files can be used without any further actions or editing.

It is a simple process to create labels for R/3, with just a few steps:

1. Design the label in LabelShop and store the output file in an SAP specific file format
2. Import the file into the SAPscript report
3. Define the printer in R/3 and print on your EasyCoder printer

Intermec

Bar Code Label Designer for SAP™ R/3® with Intermec EasyCoder Printers

Object Types

Text

- Fixed text fields
- Variable text fields
- Concatenated fields; multiple data consisting of variable fields and fixed data
- Selection of font; fixed data–printer font or Windows font; variable data–printer font
- Text properties; alignment, orientation, inverted text.

Bar code

- Fixed bar code fields
- Variable bar code fields
- Concatenated fields; multiple data consisting of variable fields and fixed data
- X-dimension, ratio, orientation (0/90/180/270 degrees), Check digit, Check digit type
- Human readable font: enable/disable, font selection, size, alignment, location

Supported Bar Code Symbolologies

Code 39, Code 39 Full ASCII, Code 93, Code128, UCC/EAN-128, Codabar, Code 11, DUN-14/16, EAN-8, EAN-13, 2 digit supplement, 5 digit supplement, UPC-A, UPC-E, 2/5, 2/5 I, 2/5 Matrix, 2/5 Industrial, MSI Plessey, Postnet*, Code16K, Codablock A, Datamatrix*, Maxicode*, PDF417*, QR Code*.

Lines and Boxes

- Line length and thickness
- Box length and width; thickness/ filling

Graphics

- Fixed graphic fields
- Graphical files in following formats are supported: bmp, dib, rle, dxf, eps, fmf, img, jpg, pcd, pcx, dcx, png, tga, wmf, wpg and Windows™ clipboard.

Working Models

ERPLabel can store label formats locally in the printer or in the host system.

Host Stored Label Format

- Some printers can use the host to send the complete label and data. The major advantage is that no application specific data is stored in the printer, so additional printers can be added or moved in the R/3 system without having to prepare the printer.
- True Type fonts can be used for fixed texts and is sent as graphic data.
- Fixed Graphics are sent to the printer at printout.

Printer Stored Label Format

- Can store label formats in printer for optimized throughput. Ideal when using slow communication lines.
- Graphics stored in printer
- True Type fonts can be stored in printer* for use with fixed or variable data.
- Host sends variable data only

Supported Print Methods in SAP R/3

- Local print on the application server (access methods L,C)
- Remote print via lpd host (access method U)
- Remote print over PC and SAPlpd (access method U or S)

SAP Online Support Service Listings

- OSS 137069 describes connection of EasyCoder printers with Direct Protocol and Fingerprint language.
- OSS 183777 describes connection of EasyCoder printers with IPL language.

Supported Printers

EasyCoder E4**, F2, F4, 201, 301**, 401, 501, 501XP, 601, 601XP; 3240, 3400, 3440, 3600, 4400, 4420, 4440, 4830, 7421.

Systems Requirements

ERPLabel

- PC running Windows95/98/Me, NT 4.0 or 2000.
- Hardware requirements–standard for respective operating system
- Intermec LabelShop® PRO v.5.0x

SAP R/3

- Release 3.0A or higher on any operating system

* Printer model dependent

** Graphics supported in printer stored label format

R/3 and SAPscript are registered trademarks of SAP AG.

Windows is a registered trademark of Microsoft Corporation.

LabelShop is a registered trademark of Intermec Technologies Corporation.

